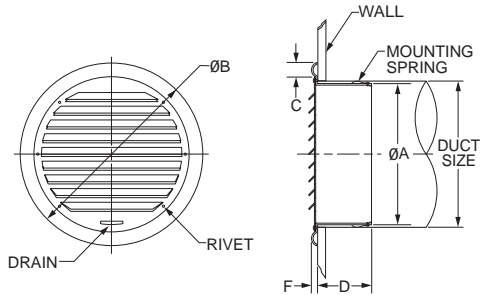




Model: **SX**
(Model SX-N: With Screen)

The SX series of vent caps are perfect for any venting applications such as storage rooms, attics, basements, and bathroom and kitchen exhausts. Beautiful anodized aluminum finish fits many decorating schemes. Insect screens are an option.



- | MATERIAL | FINISH |
|------------|---------------------------|
| ● Aluminum | ● Clear Anodized |
| | ● Custom Colors Available |

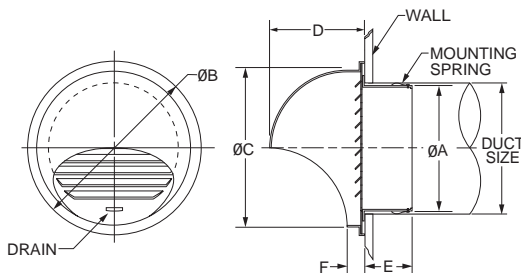
MODEL	DUCT SIZE	A	B	C	D	F	FREE AREA
SX 3	3	2 29/32	4 13/16	19/32	1 3/8	9/32	0.02 sq. ft.
SX 4	4	3 13/16	5 23/32	19/32	1 21/32	9/32	0.04 sq. ft.
SX 5	5	4 3/4	6 21/32	19/32	1 25/32	9/32	0.05 sq. ft.
SX 6	6	5 23/32	8	25/32	2 3/4	9/32	0.08 sq. ft.
SX 7	7	6 11/16	8 31/32	25/32	2 3/4	9/32	0.11 sq. ft.
SX 8	8	7 11/16	10	25/32	2 31/32	9/32	0.14 sq. ft.

Product information is subject to change without notice. All dimensions in inches.



Model: **SFX**
(Model SFX-N: With Screen)

The SFX vent cap is identical to the SX with an exception of the hood. This model is excellent for exteriors where protection from the elements is necessary and not already carried out by the building design. Insect screens are an option.



- | MATERIAL | FINISH |
|------------|---------------------------|
| ● Aluminum | ● Clear Anodized |
| | ● Custom Colors Available |

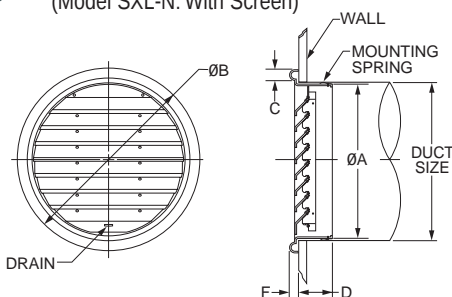
MODEL	DUCT SIZE	A	B	C	D	E	F	FREE AREA
SFX 3	3	2 29/32	4 3/4	3 25/32	2 11/16	1 9/16	9/16	0.02 sq. ft.
SFX 4	4	3 13/16	5 3/32	5 1/8	3 17/32	1 9/16	3/4	0.04 sq. ft.
SFX 5	5	4 3/4	6 29/32	5 29/32	3 15/16	1 31/32	3/4	0.05 sq. ft.
SFX 6	6	5 23/32	8 1/16	7 1/16	4 17/32	2 9/16	3/4	0.08 sq. ft.
SFX 7	7	6 11/16	9 15/32	8 9/32	5 1/8	2 9/16	3/4	0.11 sq. ft.
SFX 8	8	7 11/16	10 5/8	9 7/16	5 23/32	2 31/32	3/4	0.14 sq. ft.

Product information is subject to change without notice. All dimensions in inches.



Model: **SXL**
(Model SXL-N: With Screen)

The SXL vent cap is a large version of the SX. Its main application is as a return air grille, though it can serve in the same purpose as the SX. Its flush face lends a clean look, and its aluminum construction and spring clip mounting makes it easy to install with no screws to mar the surface. Insect screens are an option.



- | MATERIAL | FINISH |
|------------|---------------------------|
| ● Aluminum | ● Clear Anodized |
| | ● Custom Colors Available |

MODEL	DUCT SIZE	A	B	C	D	F	FREE AREA
SXL 10	10	9 21/32	12 11/16	1	2 31/32	13/32	0.19 sq. ft.
SXL 12	12	11 19/32	14 21/32	1	2 31/32	13/32	0.27 sq. ft.
SXL 14	14	13 19/32	16 5/8	1	3 11/32	19/32	0.37 sq. ft.
SXL 16	16	15 9/16	18 19/32	1	3 11/32	19/32	0.49 sq. ft.

Product information is subject to change without notice. All dimensions in inches.

